

Bus Information and Signalling

Glasgow City Council

As part of the Bus Information and Signalling (BIAS) project, we have delivered the Integrated Management Facility (IMF), based on our Common Data Management Facility.

summary

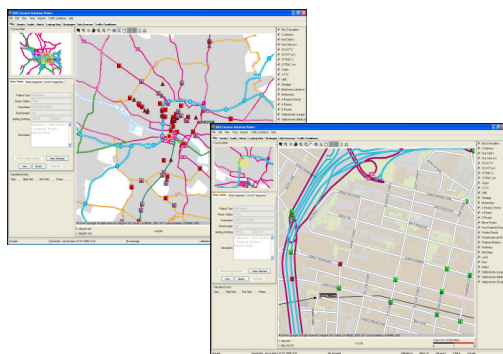
The IMF is the core of the BIAS system, providing a single central management mechanism, integrating new and existing systems, and providing a common operator interface to reduce operator load and resource demands within the traffic control centre.

Integrated Fault Management provides streamlined processing of faults, offering automatic relay to maintenance contractors and including automatic acceptance from native systems. The integrated Asset Management function provides flexible administration of site inventory.

The Strategy Integrator function analyses data such as events, congestion and bus link journey times to alert the operator to abnormal conditions. The system can then propose pre-prepared responses to resolve network problems.

CDMF also forms the heart of a city-wide car park guidance system integrating live car park occupancy feeds, with information displayed on VMS at key locations. Gateway VMS are also controlled from the system.

BIAS serves a number of stakeholders in addition to Glasgow City Council, including West Dunbartonshire Council and First Glasgow providing these partners with a comprehensive overview of network conditions, allowing better multi-modal network monitoring and management.

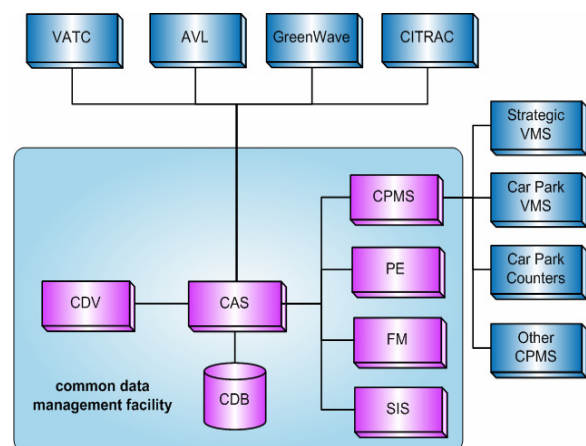


The Common GUI provides an integrated view of all BIAS sub-systems

key features

- ◆ New and legacy systems integration, including CITRAC, Peek VATC and the bus AVL/RTPI system. Integration with the Mesh communications system is also planned
- ◆ Cross-system Fire Brigade Greenwave capability, co-ordinating over 300 emergency routes which span CITRAC / VATC system boundaries
- ◆ Fully integrated reporting capability, providing Key Performance Indicators and reports to Traffic Managers' desktops
- ◆ Alert management for all connected systems, providing early indication of system and equipment issues

system architecture



CDV – Common Data Viewer
CAS – Common Application Server
CDB – Common Database

The BIAS CDMF provides a central integration framework for both new and legacy ITS systems

Intelligent transport systems

At Mott MacDonald, we deliver innovative solutions to assist in the management of traffic and travel in the urban, inter-urban, rural and multi-modal environments. The Common Data Management Facility (CDMF) is Mott MacDonald's UTMC compliant common database.

For further information, please contact the CDMF team at enquiries@cdmf.info
Or visit the websites: www.cdmf.info and www.mottmac.com