

Edinburgh Route and Car Park Guidance

The City of Edinburgh Council

A UTMC Route and Car Park Guidance System (R&CPGS) for The City of Edinburgh Council.
Delivered by Mott MacDonald, with its supply chain of Techspan and IDT.

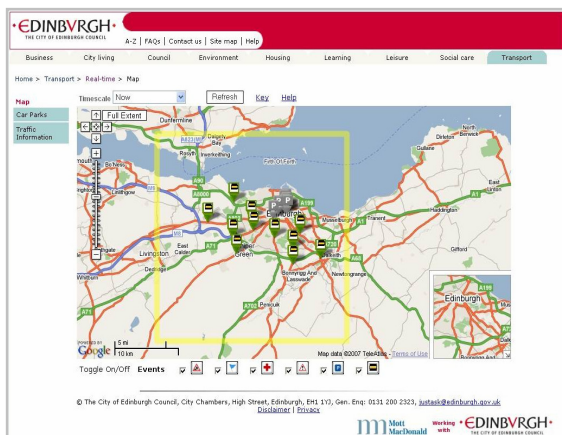
summary

The UTMC R&CPGS project has been funded through the SESTRAN (South East of Scotland Transport) Partnership. The R&CPG system has 20 car park information signs within the historic City of Edinburgh plus 11 strategic message signs across the Edinburgh area. CDMF provides the operations and control centre with facilities for automatic and manual sign setting.

GPRS Communications is used to exchange commands and data with the new UTMC compliant devices on street, with CDMF adaptors being used to capture real-time occupancy data from the legacy car park systems. This has delivered a full end-to-end UTMC system with support for legacy systems.

CEC has recently installed a journey time system from Computer Recognition Systems (CRS). This will interface to CDMF and the journey time data used to monitor the network and trigger strategies.

We have also commissioned web services which deliver real time car park occupancy, events and roadworks to the public.



The public web-site provides real-time car park occupancy and VMS settings, in addition to accidents, incidents, roadworks and events

key features

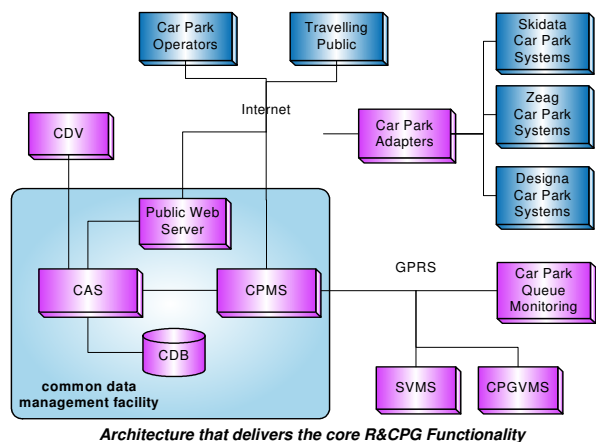
The Route and Car park Guidance System includes a CDMF based control suite comprising:

- ◆ Accident, Event, Incident and Roadworks Management
- ◆ Car Park Management
- ◆ Strategic VMS Control
- ◆ Strategy Integrator
- ◆ Fault Management
- ◆ Asset Management
- ◆ Car Park Queue Detection

The project has also delivered

- ◆ A public web-site
- ◆ Interface Adaptors to legacy Car Park Systems
- ◆ A common database adhering to the UTMC V2 standard

system architecture



intelligent transport systems

At Mott MacDonald, we deliver innovative solutions to assist in the management of traffic and travel in the urban, inter-urban, rural and multi-modal environments. The Common Data Management Facility (CDMF) is Mott MacDonald's UTMC compliant common database.

For further information, please contact the CDMF team at enquiries@cdmf.info
Or visit the websites: www.cdmf.info and www.mottmac.com