

# Travel Information Services

## Leicester City Council

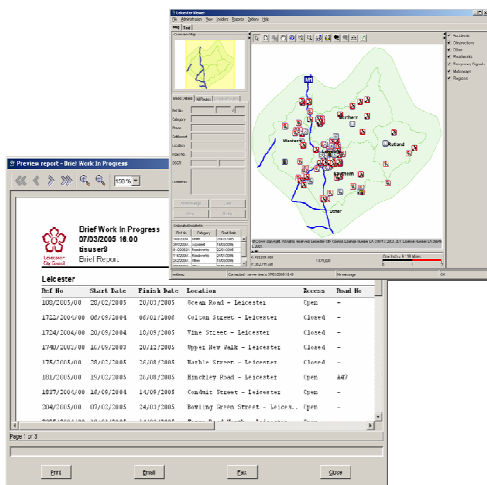
The Area Traffic Control (ATC) group at Leicester City Council use a Travel Information Services System, which caters for their proprietary needs but is cost effectively delivered based on the CDMF Platform.

### summary

The Travel Information Service (TIS) Team at Leicester's ATC have specific operational requirements related to their involvement in live radio broadcasts and the regular traffic reports service that they provide to third party organisations.

Mott MacDonald has provided a CDMF-based solution tailored to meet these operational requirements. Prior to the implementation phase, Mott MacDonald assisted Leicester City Council in the production of a Functional Specification, which captured and detailed the operational features required by the ATC group.

This project demonstrated the flexibility of the CDMF architecture as the system was developed, installed and commissioned in a very short time period, allowing the users to migrate from their original system with minimal disruption and need for training.

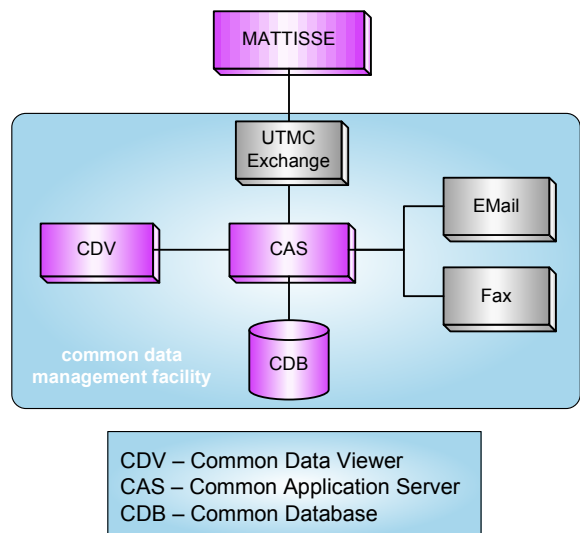


The Leicester TIS DB viewer incorporates the standard CDMF Map Display as well as a Reporting Facility which is specifically tailored to the needs of the ATC Team

### key features

- ◆ Exchange of data with neighbouring authorities
- ◆ Real-Time Interface with MATTISSE system
- ◆ Integrated, user configurable Analysis & Reporting Facility
- ◆ Email & Fax Interface for issuing incident information to stakeholders
- ◆ An enhanced gazetteer facility combining standard Ordnance Survey data with locally defined settlement areas

### system architecture



The CDMF architecture in Leicester is extended to encompass Email and Fax facilities, as well as an interface to MATTISSE

### intelligent transport systems

At Mott MacDonald, we deliver innovative solutions to assist in the management of traffic and travel in the urban, inter-urban, rural and multi-modal environments. The Common Data Management Facility (CDMF) is Mott MacDonald's UTMC compliant common database.

For further information, please contact the CDMF team at [enquiries@cdmf.info](mailto:enquiries@cdmf.info)  
 Or visit the websites: [www.cdmf.info](http://www.cdmf.info) and [www.mottmac.com](http://www.mottmac.com)

